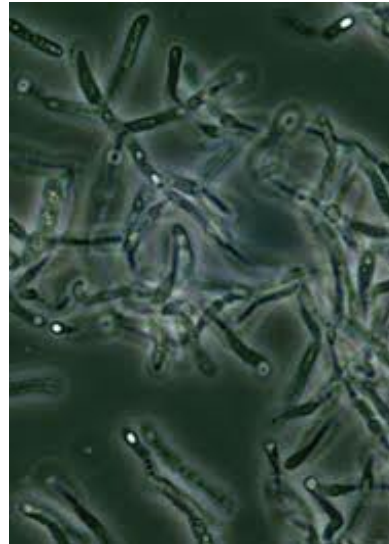
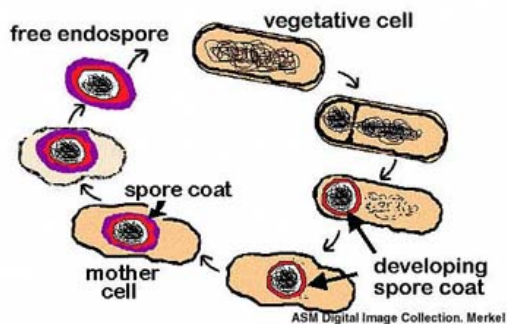
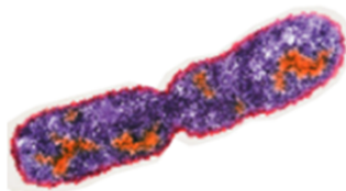


Endospores- form during harsh conditions, helps bacteria survive high temperatures, ect.

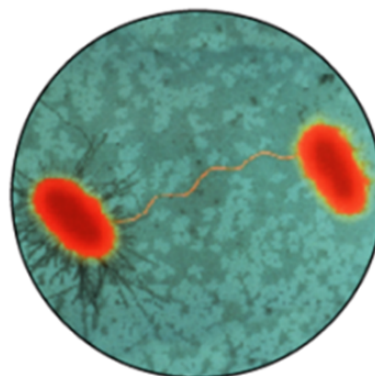


Nov 8-7:36 AM

Bacterial Reproduction



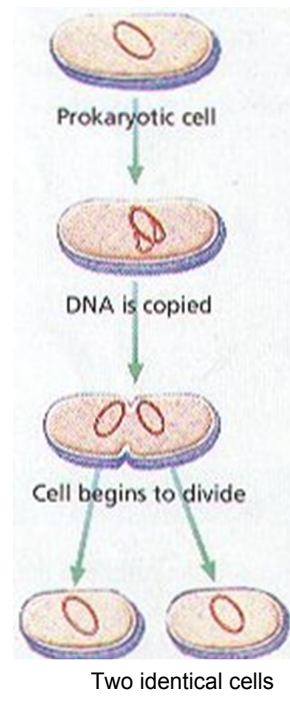
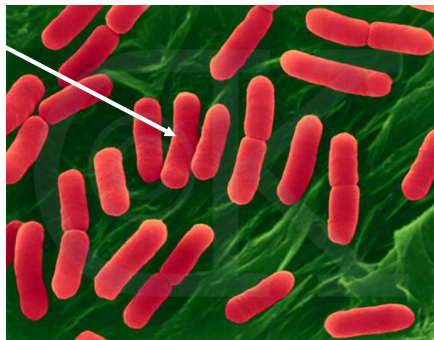
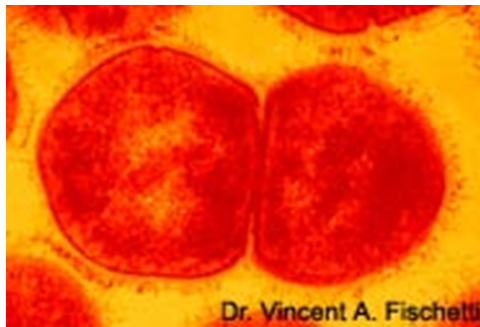
Binary Fission
(magnification: 26,500×)



Conjugation
(magnification: 7000×)

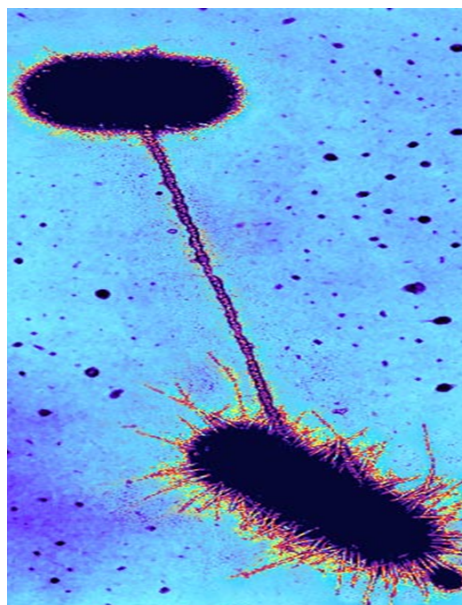
Nov 8-7:24 AM

Binary Fission- cell splits in half-
must replicate all of the DNA first.



Nov 8-7:25 AM

Conjugation- forms a bridge and swaps
genes(DNA)



Nov 8-7:29 AM